



DRIVING CONNECTIVITY IN ANGOLA



SGA is the operator of Angola's regional airports, with a mandate to enhance domestic connectivity and open new gateways to Angola

MISSION

*To connect Angola to the world.
Safely, Efficiently, Sustainably.*

VISION

*To be a leading airport operator
in Africa and a key contributor
to Angola's development*

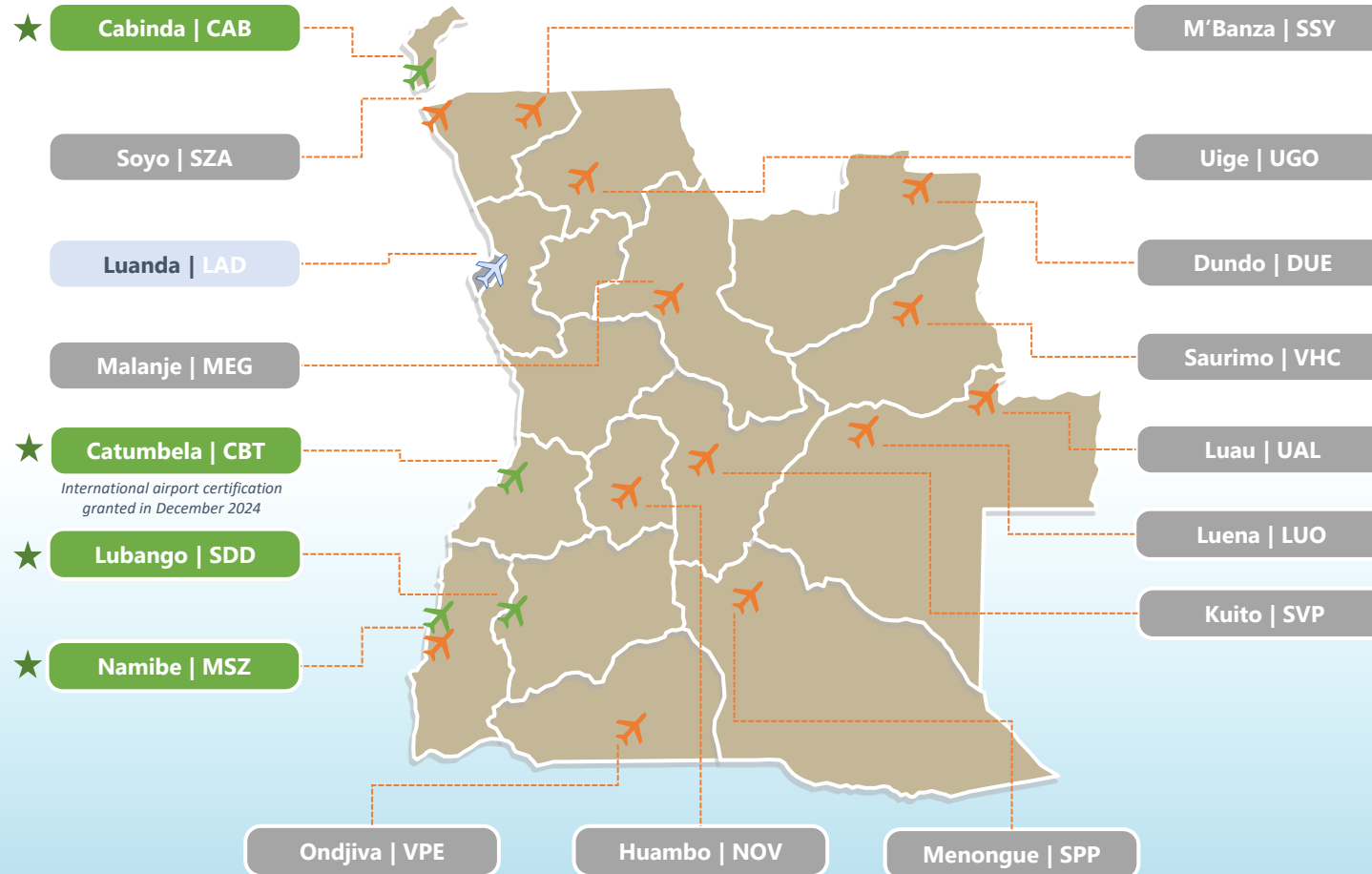
VALUES

*People-first & Team-centric;
Professionalism & Commitment;
Excellence & Innovation*



SGA's 17 regional airports, handled ~904,000 passengers in 2025

The top 4 in terms of traffic potential are Catumbela (CBT), Lubango (SDD), Namibe (MSZ) and Cabinda (CAB)



International airport certification granted in December 2024

Note: Dr. António Agostinho Neto International Airport (NBJ), the new international airport serving Luanda, is not operated by SGA

Angola is emerging as a promising aviation and tourism opportunity in Southern Africa



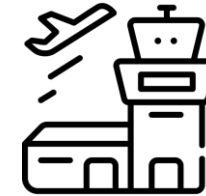
Visa Policy

Expanded visa-free access to 98 countries to support tourism and international travel



Single African Air Transport Market

Accession to SAATM will significantly boost connectivity and passenger growth

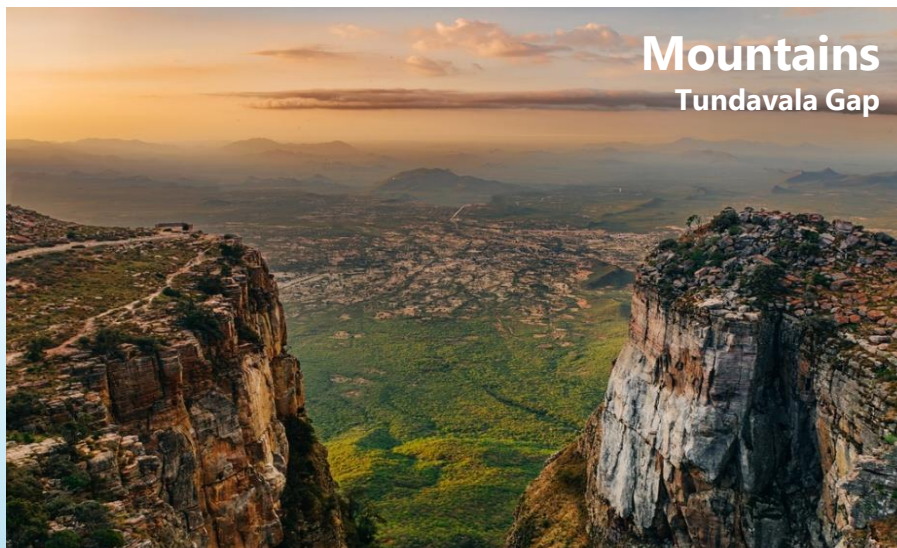


Airport Certification

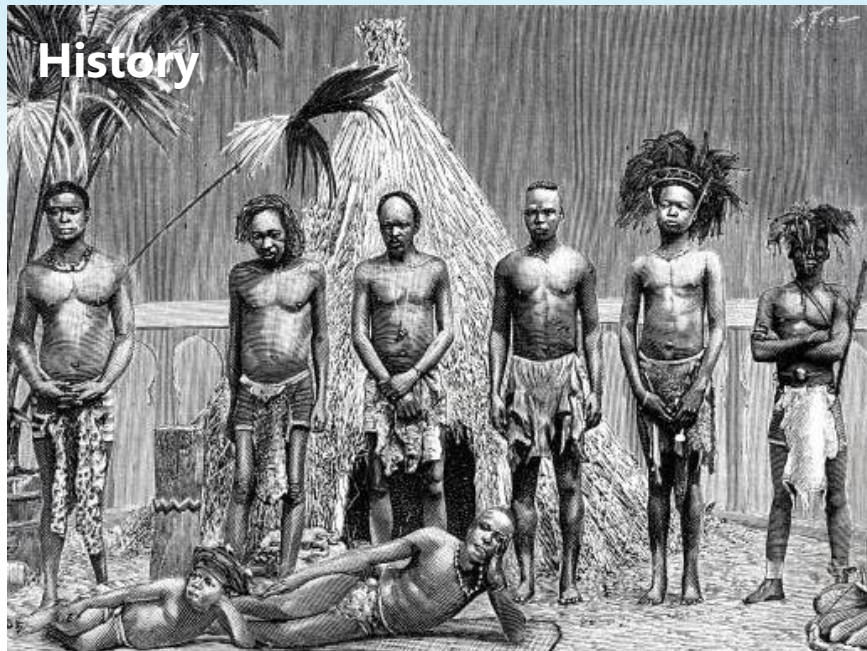
Strengthening airport readiness to support international airline operations



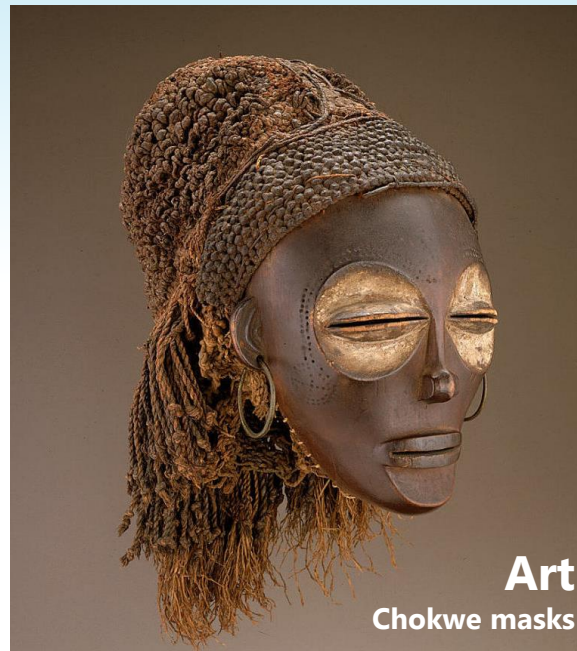
Angola has unique and diverse landscapes



Angola has a rich cultural heritage, expressed through art, dance and gastronomy



History



Art
Chokwe masks



Tribes

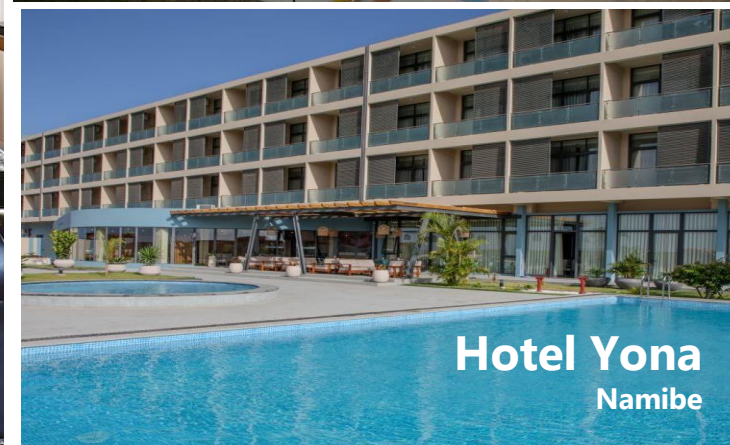


Culinary
Muamba chicken stew



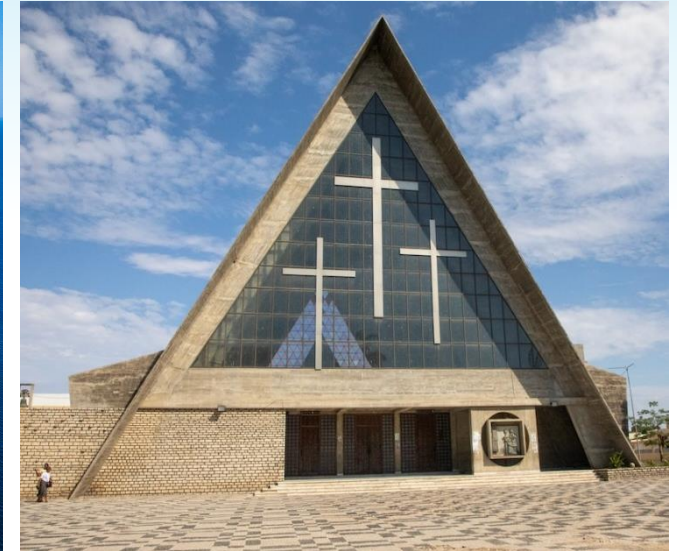
Semba

Good quality and affordable regional stays strengthen Angola's tourism proposition



Typically
40% cheaper
than Luanda

Catumbela features some of Angola's best beaches and serves Lobito Corridor's growing trade and logistics ecosystem



Investment

Lobito Corridor has a global investment of >€5.7b committed



Nature & Beaches

Baía Azul (Blue Bay), Restinga of Lobito, Caotinha



Culture & Heritage

Benguela Municipal Museum
National Museum of Archaeology
Church of Our Lady of Pópulo

Lubango combines scenic landscapes and biodiversity with growing momentum in renewable energy

Huíla exported around 147,000 cubic meters of granite last year

In 2022, the province of Huíla exported around 147,000 cubic meters of granite of various types to the main markets outside the country, corresponding to growth compared to 2021, whose exports stood at around 67,000 cubic meters.

TATIANA COSTA
03 of January, 2023



Economy

Rooted in agriculture and now expanding into solar energy and mining



Wildlife

Bicuar National Park



Adventure & Outdoors

Huíla Waterfall,
Tundavala Gap,
Serra da Leba Viewpoint

Namibe's burgeoning tourism and oil & gas industries likely to propel economic and traffic growth



Economy

Supported by growing tourism, oil & gas and mining activities



Culture

Chapel of the Navigators



Nature

Desert, beach, unique rock formations

Cabinda is Angola's oil and gas capital, while also offering scenic landscapes, including the Mayombe Forest — one of Africa's largest rainforests

Angola's Cabinda Oil Refinery to Boost Local Fuel Production by 2025

© Africa Digest News | November 4, 2024 | 5 Mins



Economy

Powers 60% of Angola's oil output, including diesel, jet fuel, and naphtha



Wildlife

The Mayombe Forest



Nature

The mouth of the Chiloango River, Landana Beach

READY INFRASTRUCTURE. REAL POTENTIAL. THE TIME IS NOW!



CATUMBELA AIRPORT



NAMIBE AIRPORT



LUBANGO AIRPORT



CABINDA AIRPORT

Catumbela, Lubango and Namibe have modern infrastructure and sufficient handling capacity, while Cabinda is being upgraded

CATUMBELA AIRPORT

- Runway 08/26: 3,700 x 45m
- PTB GFA: ~12,800 sqm
- Handling capacity: ~2,117,000
- Critical Aircraft - B777-3
- Total commercial space -1142 SQM



Catumbela, Lubango and Namibe have modern infrastructure and sufficient handling capacity, while Cabinda is being uprgaded

NAMIBE AIRPORT

- Runway 08/26: 2,500 x 45m
- PTB GFA: ~8,150 sqm
- Handling capacity: ~357,000
- Critical Aircraft - B737-7
- Total commercial space - 1248 SQM

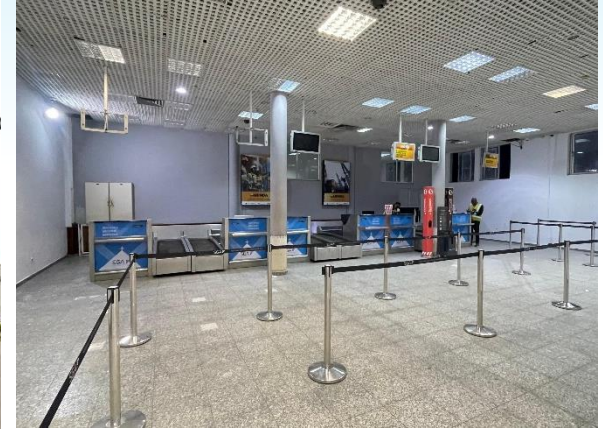


Catumbela, Lubango and Namibe have modern infrastructure and sufficient handling capacity, while Cabinda is being upgraded



LUBANGO AIRPORT

- Runway 08/26: 3,142 x 45m
- PTB GFA: ~5,900 sqm
- Handling capacity: ~1,142,000
- Critical Aircraft - B737-7
- Total commercial space - 481 SQM



CABINDA AIRPORT

- Runway 18/36: 2,500 x 30m
- PTB GFA: ~4,200 sqm
- Handling capacity: ~462,000
- Critical Aircraft - B737-7
- Total commercial space - 911 SQM

Catumbela was certified for international operations in December 2024, with certification for the other major airports underway



News 17 Dec 2024

FlyAngola launches new route to Namibia



TOURISM

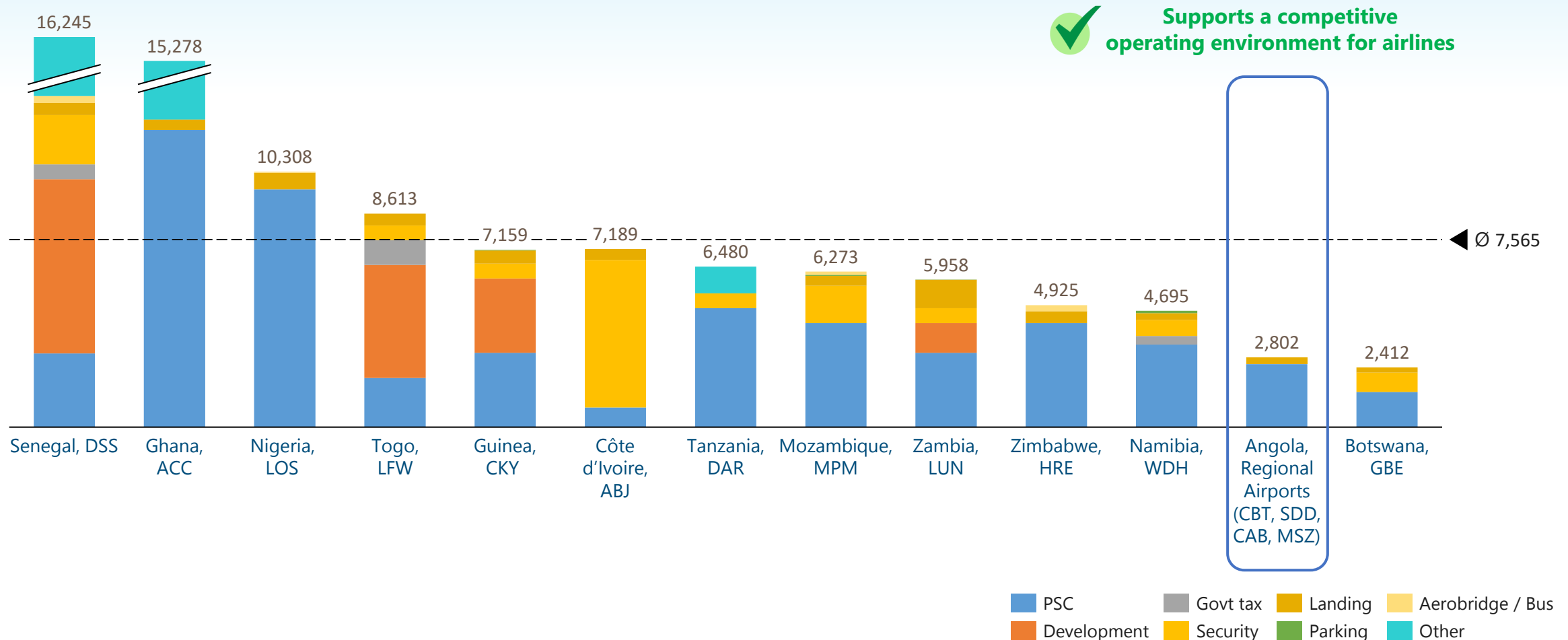
FLYANGOLA TO LAUNCH FLIGHTS BETWEEN WINDHOEK AND BENGUELA

Source: Times Aerospace

Airport certification initiatives ongoing for Lubango (SDD), Namibe (MSZ) and Cabinda (CAB)

Angola's secondary airports aero tariffs for international flights remain comparatively lower than peer airports in Southern and Western Africa

International Aeronautical Charges (USD) per turn for Typical Narrow-body Aircraft (A320) at Major African Airports, broken down by key categories (excluding Check-in/Baggage/Handling/Cargo)



Note: Long-haul flights are excluded. Regional flights only.

SGA remains committed to supporting the next phase of aviation and tourism growth in Angola



Strong untapped traffic potential beyond oil & gas, supported by tourism growth



Airport infrastructure readiness and international certification progressing



Competitive operating environment with early mover advantage in an underserved market



SGA 
SOCIEDADE GESTORA DE AEROPORTOS, S.A.

**“ANGOLA IS READY FOR TAKE-OFF.
OUR NEXT CONNECTIVITY MAY
START WITH YOU.”**

THANK YOU

